

Open Science From Theory to Practice

SABINA LEONELLI

UNIVERSITY OF EXETER &

WISSENSCHAFTSKOLLEG ZU BERLIN

@SABINALEONELLI



European Research Council
Established by the European Commission

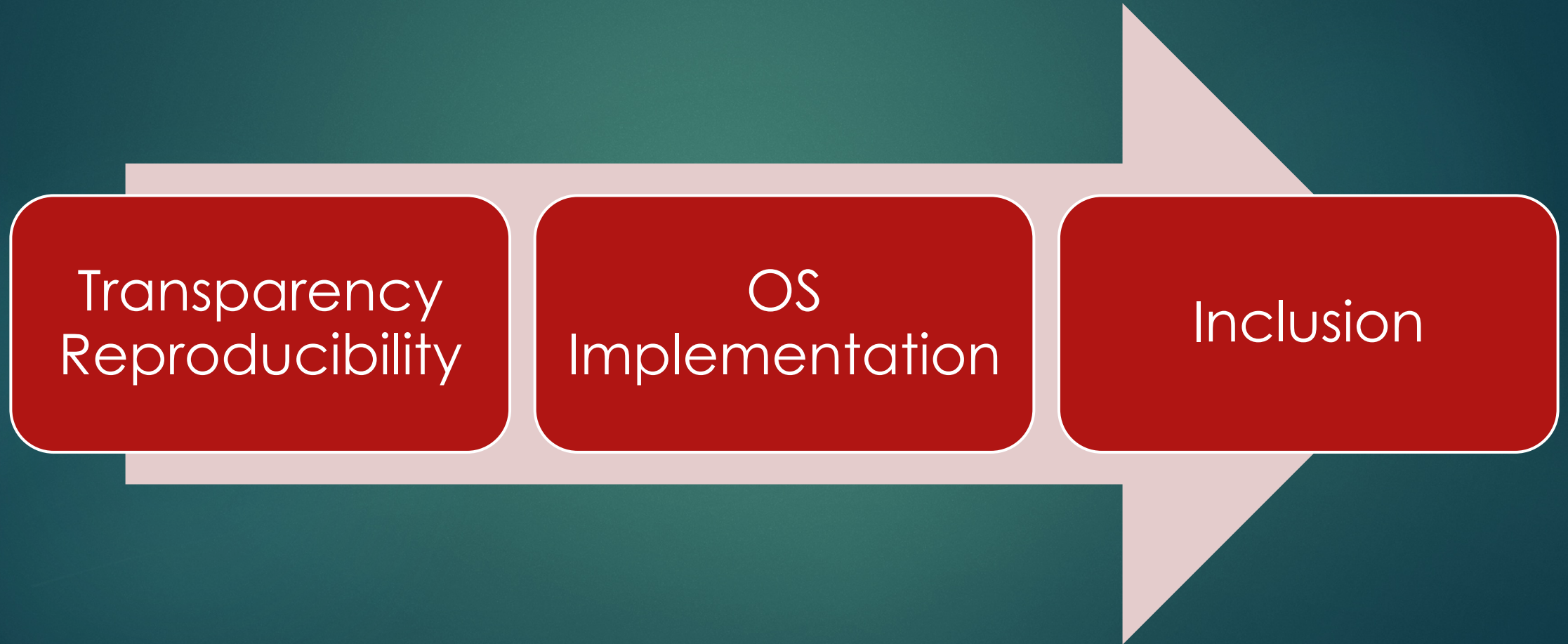


Wissenschaftskolleg zu Berlin

Open Science in theory

- ▶ **unlimited access:** making research elements available to all at any time
- ▶ **digital:** ICTs as novel opportunities to collect and mobilize outputs
- ▶ **good:** improves the content of science and researchers' working conditions
- ▶ **global:** reaches all with an interest in research, no matter their location
- ▶ **equal:** makes previously inaccessible resources available to those who may use them

The direction of travel



Open Science in practice

- ▶ access for **responsible use**: access unhelpful without skills, infrastructure, governance, administrative support to foster use
- ▶ critical and constructive **scrutiny** of how digital platforms can support existing and future work: not all research/knowledge can be digitalised
- ▶ **good for some and not others**: need to explicitly address inequity in which OS tools serve diverse research traditions
- ▶ global impact through **local solutions**
- ▶ from equity to **fairness**: which research goals are best served by current OS solutions, and how can system can be re-balanced to address other research needs and goals?

Inverting the direction of travel



Inclusion

OS
Implementation

Transparency
Reproducibility

Ways forward

- ▶ recognize danger of overgeneralized standards and principles, *including* openness
 - ▶ support community-specific, value-laden criteria for research quality
 - ▶ foster narrative/qualitative assessment over quantitative metrics
 - ▶ seek and highlight existing role models for each field
- ▶ resist hyperspecialisation and entrenched discrimination
 - ▶ reward transdisciplinary exchange as key to reliable knowledge
- ▶ identify and share burdens of OS implementation
 - ▶ incentivize long-term strategies, venues and infrastructures
 - ▶ international collaboration
 - ▶ research support (admin, data curation, research design)